

Xerox® D136 Copier/Printer



# Xerox® D136 Copier/Printer

Superior performance.  
Black-and-white simplicity.



# Print faster. Print for less. Thrill your customers.

## Increase productivity, reduce costs and exceed your customers' expectations.

Perfect for printing-intensive environments, such as pay-for-print shops and book publishing, the Xerox® D136 Copier/Printer was engineered for superior performance, renowned Xerox dependability and ease-of-use, plus state of the art finishing capabilities and the ability to add industry-leading integrated workflow-optimization solutions. The Xerox® D136 helps you grow your business because you're free to focus on what you do best: producing great work. We'll help you produce it faster and more affordably.

The Xerox® D136 Copier/Printer delivers a portfolio of the industry's most innovative features and capabilities, with the flexibility to choose your print speed, server options, and the media feeding and finishing capabilities that make the most sense for your business or organization:

- Fast print speeds of up to 136 pages per minute (ppm).
- The Xerox® D136 Copier/Printer offers high-performance copying/scanning at up to 200 images per minute (ipm). Plus, single-pass color scanning maintains your original document's appearance as you save it to your desktop, network or other location.
- The Copier/Printer comes standard with a state-of-the-art Integrated Server and offers a choice of two additional powerful servers designed to meet your individual needs.
- Proven reliability and industry-leading support. Count on the D136 to deliver a long life of peak performance.
- Unparalleled ease-of-use.
- Outstanding image quality with excellent registration.
- A robust set of in-line finishing options to expand your applications capabilities.
- Multiple feeding and paper-handling options to boost both your productivity and your ability to deliver results-oriented output.



Xerox® D136 Copier/Printer shown with 2-Tray Oversized High-Capacity Feeder, GBC® AdvancedPunch™, High-Capacity Stacker, Standard Finisher Plus, Booklet Maker Finisher, Post Process Inserter and Tape Binder.



Xerox® D136 Copier/Printer shown with optional 2-Tray High-Capacity Feeder, Standard Finisher, Folder and Post Process Inserter.

**Innovative production solutions to ensure a greener today and tomorrow.**

For more information about our commitment to environmental sustainability, visit [www.xerox.com/environment](http://www.xerox.com/environment).

# Grow your business with performance and reliability you can count on.

**Meet the demanding deadlines for all of your transactional printing with the Xerox® D136 Copier/Printer.** Consistently, accurately and reliably receive and process data, then quickly print large volumes of the high-quality bills, statements and invoices you and your customers expect. And you can place the Xerox® D136 right at your point of need.

## Speed and Productivity

The D136 Copier/Printer keeps your jobs moving, enabling you to meet your tightest deadlines and accommodate higher volumes.

- High-speed print engines deliver output at up to 136 pages per minute.
- Add a High-Capacity Feeder or an Oversized High-Capacity Feeder to accommodate your standard, oversized and custom stock requirements for long, uninterrupted runs.

## Image Quality

The fine image quality offered by the D136 Copier/Printer enables you to send a powerful message that lends impact to every communication you create.

- 2400 x 2400 dpi print resolution delivers consistent, high-quality reproduction of text, solids, photos and graphics, with exceptional registration for polished, professional results.
- Exclusive Xerox® EA Toner plays an integral role in the delivery of superior image-quality. You get the highest levels of detailing, with the sharpest text and halftones, and deep, solid blacks. Produces a less glossy finish than previous toners, leaving professional matte results. Plus, EA Toner melts at 15 degrees F (10 degrees C) less than previous D Series toners, leaving a lower carbon footprint.

## Ease-of-use

The D136 Copier/Printer has been designed for maximum ease-of-use.

- The familiar Xerox® FreeFlow® Print Server is optional and features an easy-to-use user interface that minimizes training and learning curves and maximizes agility.
- A small footprint means you can place the D136 Copier/Printer right at your point of need.

- Accepts any data stream, anytime, including Adobe® PostScript®, PDF, PCL, LCDS, IPDS, Xerox® VIPP® and PPML.
- Load-while-run, unload-while-run and change-while-run capabilities mean you can load paper, unload finished documents or change toner cartridges while the printer is running. This ensures continuous operation and high productivity.
- Color scanning with 600 x 600 dpi with 8-bit gray (256 shades) scan resolution produces copy output that truly matches the original.
- A fast, single-pass, color dual-head scanner—which means each original is only scanned once—scans at speeds up to 200 images per minute.
- Concurrent scan/receive, RIP and print processing provide maximum throughput.
- The 250-sheet Automatic Document Feeder ensures that even the largest, most complex jobs run with optimum speed and efficiency.
- The Build Job feature enables easy programming of different types of pages in one document, with no manual collation required regardless of the job's complexity.
- Convert hard-copy pages to TIFF, JPEG and PDF files that you can store in folders for fast reprint or send directly to an FTP location or an email distribution list.
- Standard color scanning allows full-color communication via email or digital file distribution (JPEG, TIFF, PDF) for fast, inexpensive collaboration.
- Print from and save to any standard USB drive device for easy walk-up convenience.



## Reliability

At Xerox, we strive to help your business or institution produce exceptional output faster and more cost effectively. But productivity and bottom-line savings mean nothing unless you can also count on consistent reliability. That's why every component within the D136 Copier/Printer has been engineered for maximum uptime and long-life durability.

### Xerox Service: All the support you'll need

Count on our world-class service to support you in many ways:

- 24/7 support ensures that our service experts are available to assist you no matter when the need arises.
- We've made it easy for you to perform routine maintenance and tune-ups yourself and maximize your uptime via the Xerox Productivity Plus Integrated Maintenance Program.
- Automatic Meter Reads (AMR) ensure accurate billing (where available).



# Flexibility for every environment.

## Finishing Options



### Standard Finisher with Optional C/Z Folding

- 2/3-hole punching, 3,000-sheet stacking, 200-sheet interposing, single or dual 100-sheet variable length stapling



### Booklet Maker Finisher with Optional C/Z Folding

- All the features of the Standard Finisher plus 2,000-sheet stacking tray, booklet making up to 25 sheets (100 pages)



### Xerox® SquareFold® Trimmer

- Available with Booklet Maker Finisher, SquareFold up to 25 sheets (100 pages) for face trimming between 2-20 mm
- Learn more at [www.xerox.com/SquareFoldTrimmerSpecs](http://www.xerox.com/SquareFoldTrimmerSpecs)



### GBC® AdvancedPunch™

- Learn more at [www.xerox.com/GBCAdvancedPunchSpecs](http://www.xerox.com/GBCAdvancedPunchSpecs)



### High-Capacity Stacker

- 5,000-sheet offsetting output stacking

## Advanced Finishing Options



### Standard Finisher Plus

- Includes Standard Finisher features with optional C/Z folding plus DFA (Document Finishing Architecture) required to support additional advanced finishing options



### GBC® eBinder 200™

- Stacking, punching and GBC booklet binding



### Xerox® Tape Binder

- Binds booklets of up to 125 sheets of 20 lb. (75 gsm) paper
- Individual tape refill provides (425) 11 in. binds
- Compatible with Plockmatic Pro50/35™ Booklet Maker
- Learn more at [www.xerox.com/XeroxTapeBinderSpecs](http://www.xerox.com/XeroxTapeBinderSpecs)



### Plockmatic Pro50/35™ Booklet Maker

- Several options available including SquareFold, Cover Feeder, Face Trimmer and Bleed Trim Unit
- Saddle-stitch and fold either 1 to 50 or 1 to 35 sheets of (80 gsm) paper
- Combine with Xerox® Tape Binder for even more booklet making capabilities
- Learn more at [www.xerox.com/Plock50-35Specs](http://www.xerox.com/Plock50-35Specs)

## Feeding Options



### 2-Tray High-Capacity Feeder

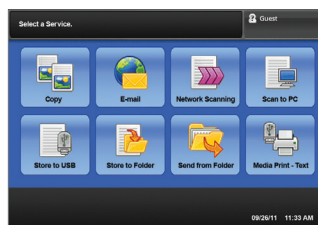
2,000 sheets each tray  
(4,000 sheets total): Letter-size / A4



### 2-Tray Oversized High-Capacity Feeder

2,000 sheets each tray (4,000 sheets total):  
Up to 13 x 19.2 in. / SRA3

# Expand your capabilities with print server options.



## Xerox® Integrated Copy/Print Server for the Xerox® D136 Copier/Printer

You'll get a simple workflow with an easy-to-use touch screen, excellent features and a small footprint. To learn more, visit [www.xerox.com/D136IntegratedServerSpecs](http://www.xerox.com/D136IntegratedServerSpecs)

## Xerox® External Servers

Powerful servers with color tools, workflow capabilities, and blazing speed, all at your fingertips.



### Xerox® FreeFlow® Print Server

(Optional)

You'll get unmatched power and synergy across our entire monochrome, color and highlight color portfolio on top of a superior feature set. To learn more, visit [www.xerox.com/DSeries-FreeFlowSpecs](http://www.xerox.com/DSeries-FreeFlowSpecs)



### Xerox® EX136 Print Server, Powered by Fieri®

(Optional)

You'll get powerful productivity with the Fieri workflow when demanding turnaround times, flexible make-ready and high-quality output are needed. To learn more, visit [www.xerox.com/DSeries-EX136Specs](http://www.xerox.com/DSeries-EX136Specs).



The ES-2000 spectrophotometer is used to calibrate the printer for smoother and more consistent gradients and consistent prints within a print run and across print engines.

# Simplify your workflows.

Workflow Solutions	Function	What It Does for You
Xerox® FreeFlow® Web Services	24/7 web portal connects your print shop to your customers.	From anywhere, your customers can submit new jobs securely and reorder existing ones over the internet (or an intranet).
Xerox® FreeFlow Process Manager®	Automates your print shop's common pre-press steps.	In addition to a touchless workflow, you can process more jobs faster, for less, and maximize your printers.
Xerox® FreeFlow Output Manager®	Automates load balancing and job scheduling.	You can automate your application production and enhance efficiency.
Xerox® FreeFlow Makeready®	Simplifies prepress operations to help make short work out of complex jobs.	Jobs can be completed more accurately and more quickly, freeing up your operators to process more work.
FreeFlow Variable Information Suite	A suite of tools to help you design, create and manage variable data print jobs more quickly and profitably.	Add the power of personalization without compromising productivity. On their own or as an integrated solution, VI Suite tools can help you optimize production workflows and maximize your bottom line.
FreeFlow Express to Print	Intuitive visual interface simplifies job ticketing and pre-press functions while template-based automation streamlines job set-up.	Cost-effectively increase your productivity, even on cumbersome jobs like business cards, books and manuals.
XMPie® uDirect®	Produce highly-personalized, visually-rich dynamic documents natively in Adobe® InDesign®.	Create data-driven print pieces that get noticed and drive significantly higher response rates through targeted messaging and relevant graphics.
XMPie® StoreFlow	Allows customers to submit and track orders through the Web 24/7.	A complete Web-to-print solution for creating and managing online stores and marketing portals. By combining Web-to-print with prepress automation, StoreFlow includes everything required to cost-effectively scale your business through the Web.
XMPie® TransMedia	Develop and deploy integrated multichannel campaigns that effectively leverage print, email and Web.	Create and manage interactive multi-touch cross-media campaigns that engage each recipient and develop ongoing conversations.



## Security

You can rest assured that our Xerox® D136 Copier/Printer provides you and your customers the secure transmission of business-critical data so essential for transactional communications such as financial statements. Our FreeFlow® Print Server enables security standards like Strong Passwords, Secure FTP, IP Filtering and Port Blocking. It contains flexible security with features that protect you from unauthorized access and modification—any or all of these features can be configured to groups as well as individuals.

**The Advantage:** The ability to guarantee secure transmission of business-critical data is essential to your relationship with your transactional customers.

# Create polished and professional applications.

## Achieve Better Response Rates for Your Transactional Pieces

Because the Xerox® D136 Copier/Printer accommodates a wide range of common data streams natively, it can easily produce all of your transactional applications. And you can increase response rates for those applications by adding high-quality data-driven graphics to your customers' bills and statements.

The Xerox® D136 lets you turn your standard transactional applications into cost-effective sales tools—it's easy to add personalized graphics, promotional offers and marketing content. And you'll save on print and postal costs.

## You'll Find the Book Opportunity Easy to Read

With the Xerox® D136, you are well prepared to succeed when printing books and manuals. We offer the right business model, the right workflow tools and experience, and the right technology to help ensure your success in the growing digital book printing business. An excellent complement to offset, this system enables you to deliver the look and feel that authors, publishers and readers demand with high imaging quality and an offset-like matte finish.

## Quick and High-quality Publishing Applications

The Xerox® D136 makes quick work of publishing applications while delivering the high image quality you and your customers demand. Whether it's a communication to an audience of thousands or a personalized newsletter, you can produce your applications with speed and efficiency—and exceed your customers' expectations with exceptional image quality. For example, you can:

- Personalize text and graphic content to capture attention and add value to your communications.
- Deliver high-quality output on media that gives your customers a competitive advantage in their markets—the Xerox® D136 lets you choose from an expansive range of substrates so you can be creative.



## Xerox® Paper and Specialty Media

### See the Difference Quality Makes

Our digitally optimized papers and specialty media products are specifically engineered in concert with the Xerox® D136 Copier/Printer to provide you with superior productivity, reliability and flexibility. Choose from a broad selection of paper and specialty media (Xerox® DocuMagnets, window clings, accordion pictures, and many more), in a full range of weights and sizes, to create a variety of print applications and finished documents.

For more information, visit us at [www.xerox.com](http://www.xerox.com).

## Finishing Applications



Sort and Collate



Stapling



Hole Punch



Booklet



Folding



Z-Fold



Tri-Fold



Tabloid Z-Fold



Face Trim



Bleed Trim



Square Fold

# Specifications for the Xerox® D136 Copier/Printer

## Print Engines

- Monochrome Xerographic Engine
- Print Speeds
  - 136 ppm – 8.5 x 11 in. (A4)
  - 82 ppm – 8.5 x 14 in. (B4)
  - 68 ppm – 11 x 17 in. (A3)
  - 34 ppm – 12 x 18 in. (SRA3)
- First-copy-out Time: 3.7 seconds or less
- Simplex or duplex printing
- Up to 1200 x 1200 dpi RIP resolution and up to 2400 x 2400 dpi resolution with halftone screen 106 lpi (default) or 150 lpi (high quality mode)
- Front to back registration: +/- 1.0 mm
- Automatic Meter Read (AMR) capable (where available)

## Document Storage

- 320 GB or larger Hard Drive with 14.6 GB for document storage

## Scanner / Document Handler

- Advanced Color Scanning
- Dual Head Scanner: up to 200 ipm black-and-white scanning, simplex / duplex
- Optical 600 x 600 dpi 8-bit Gray (256 shades) scan resolution
- Scans in industry standard PDF, JPEG, TIFF or multi-page TIFF; supports LDAP
- Scan to Email with Mail Delivery Notification
- Scan to Network File Server
- USB Scan / Save to and Print from USB
- 250-sheet Duplex Automatic Document Feeder
- Throughput sizes: 5 x 8 in. to 11 x 17 in. (A5 to A3)
- Throughput weights:
  - Simplex or duplex: 16 lb. bond to 110 lb. index (52 to 200 gsm)
- Optional PDF Scan Kit

## Paper Handling

### Stock weights and capacity:

- **Tray 1<sup>1</sup>:** 1,100 sheets – Standard selectable sizes: Letter (8.5 x 11 in.), A4 (8.27 in. x 11.69 in.), JIS B5 (7.17 x 10.12 in.), Executive (7.25 x 10.5 in.)
- **Tray 2<sup>1</sup>:** 1,600 sheets – Standard selectable sizes: Letter (8.5 x 11 in.), A4 (8.27 in. x 11.69 in.), JIS B5 (7.17 x 10.12 in.), Executive (7.25 x 10.5 in.)
- **Tray 3-4<sup>1</sup>:** 550 sheets each – 5.5 x 7.2 in. to 13.0 x 19.2 in. (140 x 182 mm (A5) to 330 x 488 mm (SRA3))
- **Tray 5 Bypass Tray:** 250 sheets – 3.93 x 5.82 in. to 13 x 19.2 in. (100 x 148 mm to 330 x 488 mm); 16 lb. bond to 140 lb. index (52 gsm to 253 gsm)
- **Optional High-Capacity Feeder:** 2 trays, 2,000 sheets each – 8.5 x 11 in. (A4); 16 lb. bond to 80 lb. cover (52 to 216 gsm)
- **Optional 2-Tray Oversized High-Capacity Feeder:** 4,000 sheets – 7.16 x 7.16 in. to 13 x 19.2 in. (182 x 182 mm to SRA3); 16 lb. bond to 110 lb. cover (52 to 253 gsm)
- **Coated Stocks:** Refer to Customer Expectation Document for approved Xerox® coated stocks

## Standard Finisher

- Multi-position stapling: single or dual 100-sheet variable length
- 2- and 3-hole punch (North America); 2- and 4-hole punch (Europe and South America); 4-hole Swedish punch
- Stacker capacity: 3,000 sheets (20 lb. / 80 gsm); Top tray: 500 sheets (20 lb. / 80 gsm)
- 200-sheet interposer for pre-printed and full-bleed sheets: 8.5 x 11 in. to 11 x 17 in. (A4 to A3); 16 lb. bond to 90 lb. cover (52 to 220 gsm)

## Booklet Maker Finisher

### Includes features of the Standard Finisher with a 2,000-sheet stacker tray plus:

- Automatically creates booklets of up to 25 sheets (100 imaged sides with saddle stitching) – 8.5 x 11 in., 8.5 x 14 in., 11 x 17 in., 12 x 18 in., 13 x 18 in. (A4, B4, A3, SRA3)

## Xerox® SquareFold® Trimmer Module

- Square fold up to 25 sheets (100 pages)
- Face trim between 2 to 20 mm in 0.1 mm increments
- 64 to 300 gsm (uncoated); 106 to 300 gsm (coated)
- Accepts paper sizes: 8.5 x 11 in. SEF to 13 x 18 in. (216 x 279 mm to 330 x 457 mm)
- Available with Booklet Maker Finisher only

To learn more, go to [www.xerox.com/SquareFoldTrimmerSpecs](http://www.xerox.com/SquareFoldTrimmerSpecs)

## Optional High-Capacity Stacker with Rollaway Cart

- 5,000-sheet offsetting output stack tray; 7.2 x 8.3 in. to 13 x 19.2 in. (B5 LEF to SRA3)
- 500-sheet top tray and includes one rollaway cart; additional carts available

## Optional Folder

- C-fold and Z-fold 8.5 x 11 in. (A4)
- Print on inside or outside of folded paper
- Folds 11 x 17 in. (A3) Z-fold for insertion into letter (A4) document sets (Engineering Z-fold)
- Available with Standard Finisher, Booklet Maker Finisher and Standard Finisher Plus

## GBC® AdvancedPunch™

- Paper supported: 8.5 x 11 in. (A4) Long Edge Feed (11 in. (297 mm) side only)
- 20 lb. bond to 80 lb. cover (75 to 216 gsm)
- Several customer replaceable Die Sets available

To learn more, go to [www.xerox.com/GBCAdvancedPunchSpecs](http://www.xerox.com/GBCAdvancedPunchSpecs)

## Additional (DFA) Finishing Solutions

### Standard Finisher Plus

- Stacker capacity of 2,000 sheets (20 lb. bond / 80 gsm)
- Same features as Standard Finisher with integrated DFA architecture required to enable a variety of third-party inline finishing options including those listed below:

### GBC eBinder 200™

- Stack, punch and bind lay flat (8.5 x 11 in. (A4)) booklets
- Self-adjusting bind elements (one-size-fits-all) available in black, navy blue, white and frost/clear

### Xerox® Tape Binder

- Binds 1-125 sheets of 20 lb. (75 gsm) paper
- Individual tape refill provides 425 11 in. binds
- Can be combined with the Plockmatic Pro50/35™ Booklet Maker

To learn more, go to [www.xerox.com/XeroxTapeBinderSpecs](http://www.xerox.com/XeroxTapeBinderSpecs)

### Plockmatic Pro50/35™ Booklet Maker

- Saddle stitch and fold from 1 sheets to 35 sheets or to 50 sheets, producing up to a 140-page or 140-page (20 lb. bond / 80 gsm) booklet or simply fold a single sheet
- Can be combined with the Xerox® Tape Binder

To learn more, go to [www.xerox.com/Plock50-35Specs](http://www.xerox.com/Plock50-35Specs)

## Data Security

- Standard Secure Print, Authentication with LDAP/Kerberos/ SMB/CAC, Password Protected PDF, FIPS 140-2 (Integrated Server only), S/MIME Encrypted Email, IPsec, 802.1X, SNMP v3.0, Email over SSL, Image Overwrite (3x or 1x, Immediate, Scheduled, On Demand) Hard Disk Data Encryption, Audit Log Optional CAC
- IPv6 Ready
- 256 Bit Encryption
- Common Criteria Certified
- Job Based Accounting

## Electrical Requirements<sup>2</sup>

- Print Engine:
  - 208-240 VAC, 60/50 Hz, 15/13 amp service
  - KVA Rating: Max Power Consumption: 2.8-3.1 KVA
  - Agency certifications: ENERGY STAR®, EPEAT (Silver), CSA, Section 508, MEDITECH, Citrix, WHQL, ECOLOGO®, EAC, NOM, RoHS, CE, WEEE Compliance
- Optional Feeding/Finishing:
  - Each module requires 100-240 VAC, 60/50 Hz power

## Print Servers

### Integrated Copy/Print Server (Standard)

#### Hardware Specifications

- 320 GB Hard Disk Drive, 2 GB RAM
- 10.4 in. color, touch screen flat-panel display
- Ethernet interface (10 MBTX/sec and 100 MBTX/sec and 1000NBX/sec (optional))

To learn more, go to [www.xerox.com/D136IntegratedServerSpecs](http://www.xerox.com/D136IntegratedServerSpecs)

### Xerox® FreeFlow® Print Server (Optional)

To learn more, go to [www.xerox.com/DSeries-FreeFlowSpecs](http://www.xerox.com/DSeries-FreeFlowSpecs)

### Xerox® EX136 Print Server, Powered by Fiery® (Optional)

To learn more, go to [www.xerox.com/DSeries-EX136Specs](http://www.xerox.com/DSeries-EX136Specs)

<sup>1</sup> Capacity based on 16 lb. bond to 80 lb. cover (52 gsm to 216 gsm)

<sup>2</sup> Refer to the Install Planning Document for installation details

To view a product video, visit [www.xerox.com](http://www.xerox.com). Build and configure your own Xerox® D136 Copier/Printer at <http://buildyourownxerox.com/d95/>.

